



Specification

Planar Neon Series

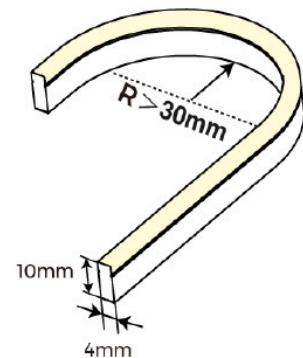


- ※ Light source: High luminous efficiency, SMD2835, 2735, LM80 proved.
- ※ Process & Material: High light transmittance, environmental silicone material, integrated extrusion molding technology, IP65.
- ※ Optical Design: Unique optical light distribution structure design, uniform lighting surface and no shadow.
- ※ Appearance Design: Compared with the traditional neon tube or PVC guardrail tube, the silicone material has good flexibility, the simple and stylish appearance, which is exquisite and unique.
- ※ Product Certification: UL、CE、ROHS.
- ※ Environmental Features: Resistance to saline solutions, acids & alkali, corrosive gases and UV.
- ※ Working/Storage Temperature: Ta:-20~55°C / 0°C ~ 60°C.
- ※ 3 years warranty, life span over 36000 hours.

▼ Application

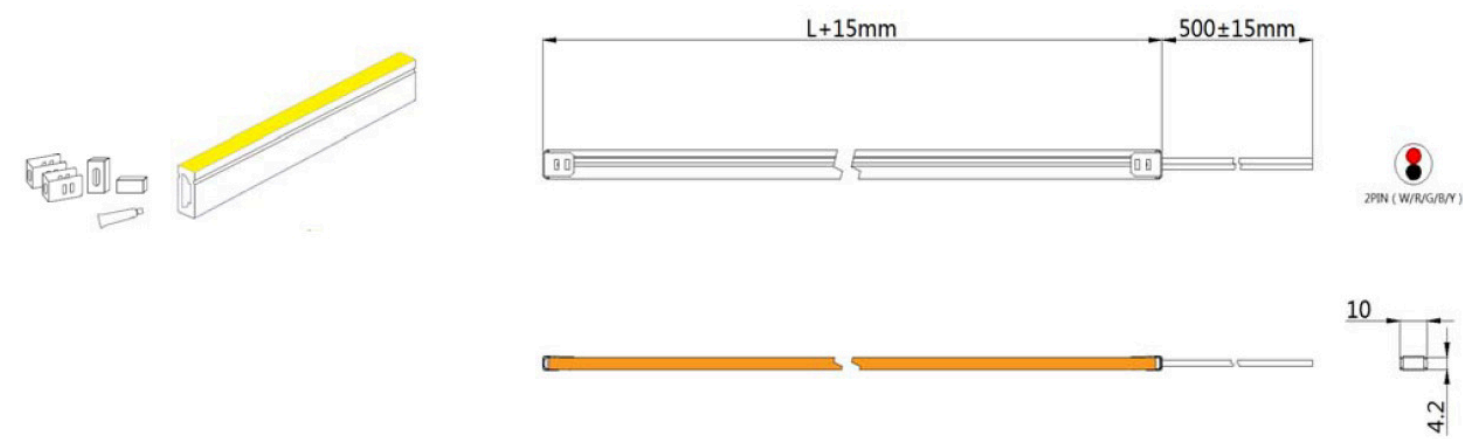
- ※ Signage lighting
- ※ indoor lighting

▼ Bending application



▼IP Process& Structure Parameters

IP65 metal clip + silicone end cap

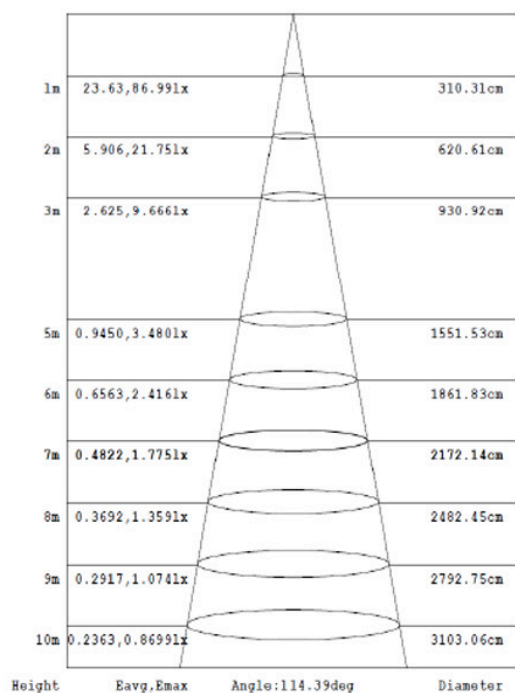


▼Basic Parameters

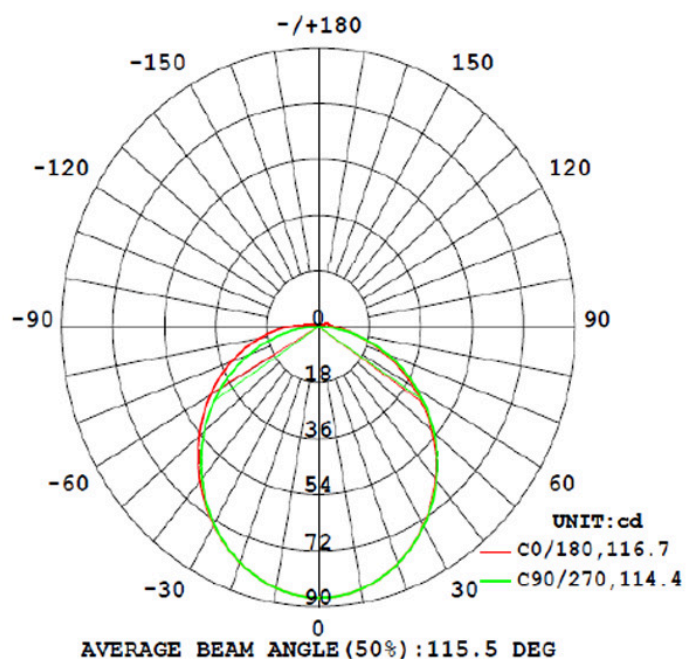
Model	CCT/colors	CRI	Input voltage (V)	Rated current (A)	Rated power (w)	Lumens (LM)	Size (mm)	Max.length	Cutting unit (mm)
NTS0410-8XXXXCDN050CC0500	2300K	>80	12V/24V	0.6A/0.3A	7.2	240	W4*H10	5000mm	17.86 (12V) 41.66 (24V)
	2700K					290			
	3000K					300			
	4000K					300			
NTS0410-0XXXXCDN050CC0500	R 620-630nm	/				/			
	G 525-530nm								
	B 465-470nm								
	Y 587-592nm								

- Note :
- 1、 The above data is the testing result of 1M standard product;
 - 2、 The power and lumens of output data can be vary up to ±10%;
 - 3、 The above parameters are all typical values.

▼ Light Distribution



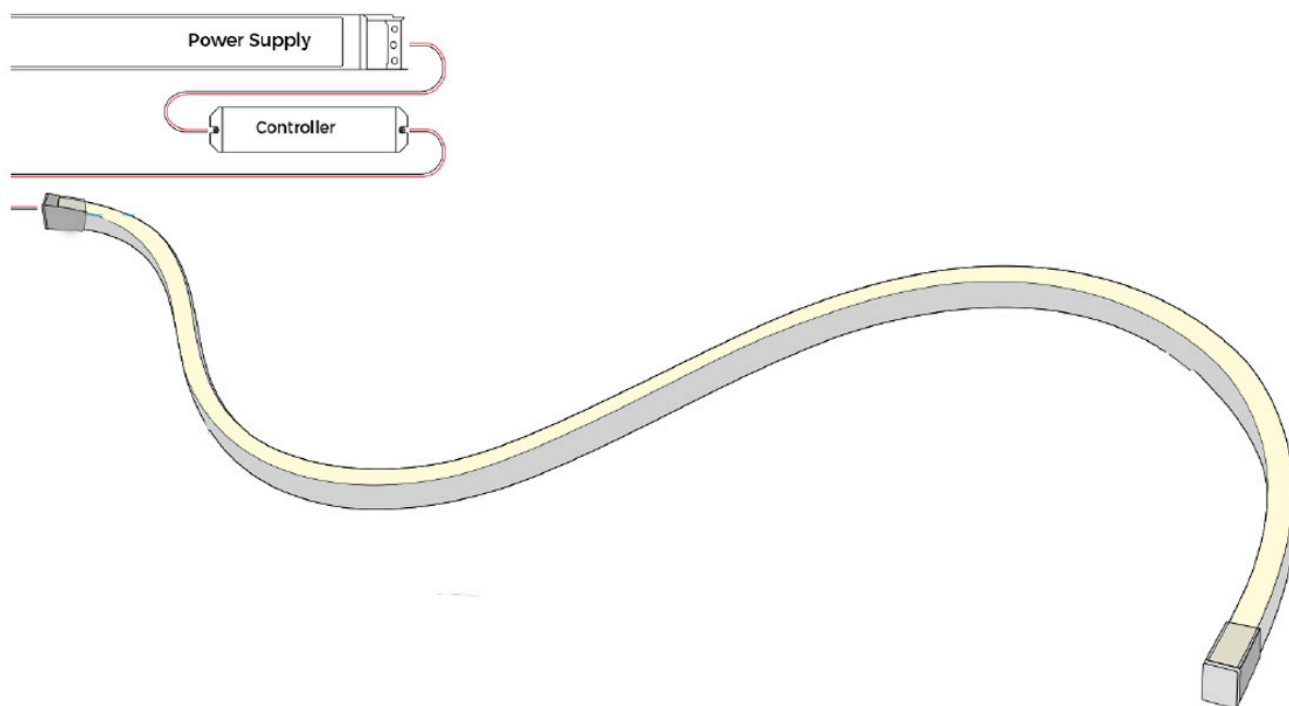
Effective average illuminance



Light distribution

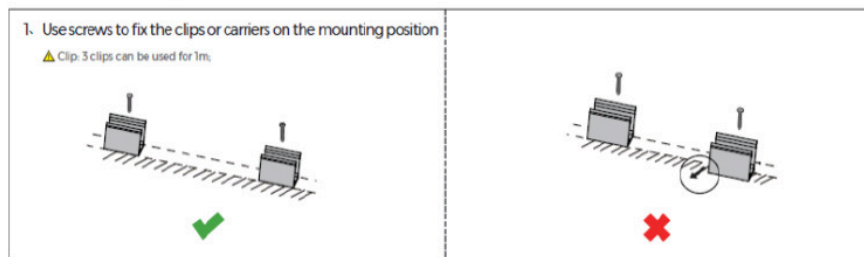
Note: The above data is the testing result of CCT 4000K, if there is need for the IES files of other colors, please download the specific file through the IES data bank.

▼ System solution

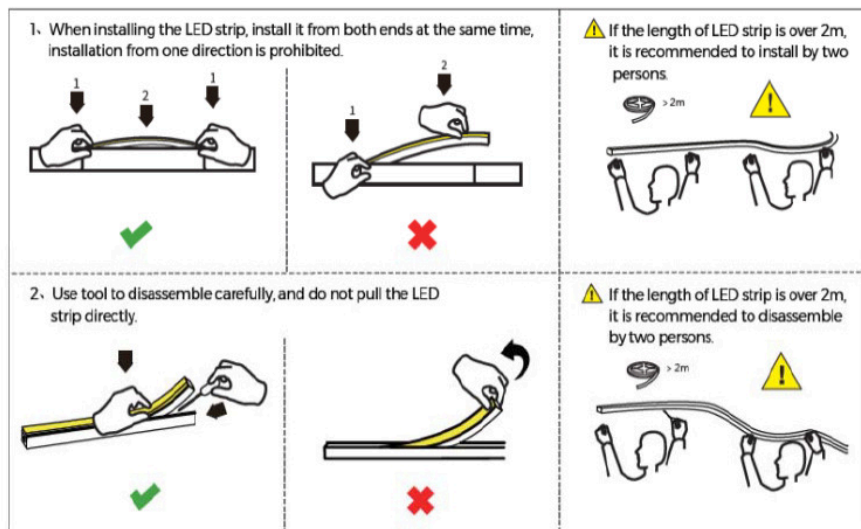


▼ Installation Guidance

Installation of clip



Installation of carrier



Cutting method

